

# Lotus Lines

Evergreen  
Lotus Car Club

July 2002

## ABFM for 2002 is Almost Here!

By Jim Taylor

July 26<sup>th</sup> and 27<sup>th</sup> are just around the corner and it's time to make preparations for this year's ABFM being held at Bellevue Community College. We usually have from 15 to 20 Lotus show up for this event each year. Our class structure is broken down by 'generation' instead of by model. So there's class one (LO-01) which is for the early cars: Sevens, Caterhams, Cortinas, Early Elites, and the Eleven. Class two (LO-02) is for the second generation cars: Elan, Elan+2, and Europa. Then for class three (LO-03) we have the latest generation of cars: late Elan, late Elite, Eclat, Esprit, and Elise.

The schedule of events for this year is as follows:

**Friday, July 26<sup>th</sup>, 7:30 to 9:30pm** – Cocktail Party at Park Place Motors

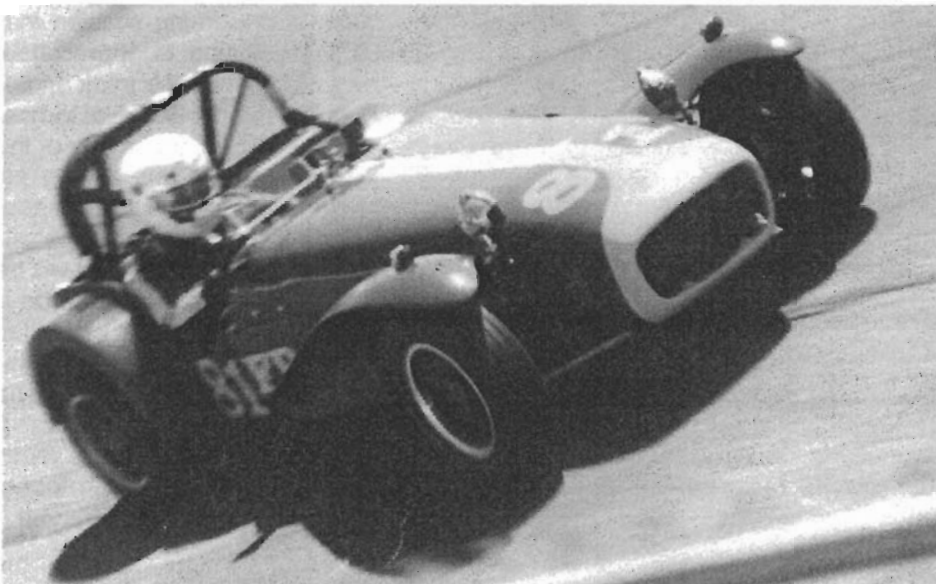
(well, actually behind their main showroom). There will be a no-host bar, hors d'oeuvres, raffle tickets with lots of prizes, and the best photo award (don't forget to bring one of your great car photos, you know, from the box in the basement). Oh yeah, you will also be able to pickup all the stuff you'll need on the field for the event at the pre-registration table. It'll save you from waiting in line on Saturday.

**Saturday, July 27<sup>th</sup>, 8:00am till 4:00pm** – The actual show is at Bellevue Community College just off the 148<sup>th</sup> street exit from I-90. There will be about 350 to 400 british cars being shown, plus more in the for sale lot, and you may even find one of those parts your Lotus has been missing in the Swap Meet area (yeah I know, the odds are slim, but it doesn't hurt to have a look anyway). Show up early so you can get your morning latte. Don't forget to bring a picnic lunch or you can buy some 'bangers' and fries from the vendor. Car placement is from 8:00am until

11:00am. Once the cars are placed (at 11:00am) you will not be able to start or move them until 4:00pm. The car display is from 11:00am to 4:00pm. The balloting deadline is 2:00pm, so make sure you vote often and get the ballot into the official box (located at the ABFM booth) by 2:00pm at the latest! The awards ceremony will start at 3:00pm and the pre-registration (postmarked by June 27<sup>th</sup>) prize of \$500 cash will be given away to some lucky entrant (great odds!), but you must be present at the awards ceremony to win...

There will be the usual ABFM regalia at the ABFM booth (up near the college buildings) with t-shirts, sweat shirts, golf shirts, etc for you to purchase and commemorate the 2002 ABFM! Or just to have a new shirt to get dirty wearing around the garage...

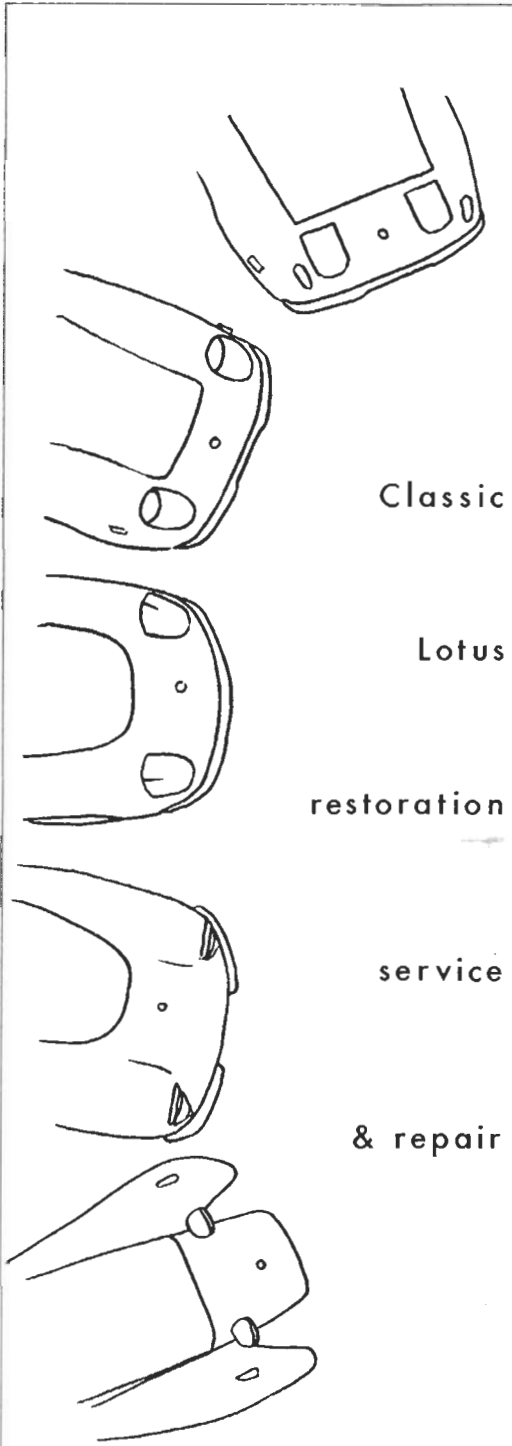
See you there!!!



Myles Winbigler approaching the turn nine apex at Pacific Raceways during Saturday's SOVREN Spring Sprints in his 1960 Series II Seven America.

### Inside this issue:

|                       |   |
|-----------------------|---|
| SOVREN Spring Sprints | 1 |
| From the Chair        | 2 |
| Member Notes          | 3 |
| WCLM                  | 3 |
| ABFM                  | 4 |
| Editor's Garage       | 5 |
| Event Calendar        | 6 |
| Classified Ads        | 7 |



Classic

Lotus

restoration

service

&amp; repair

**Randall Fehr Restorations**

30 South Horton Street  
Seattle, Washington 98134  
206-622-7469

**From the Chair**

We received our tickets for the SOVREN Historics. If you haven't gotten yours contact me ASAP. By the time you read this, Saturday will probably have filled up and we may have many tickets for Sunday. If Saturday is the only day you can go contact me though Saturday is booked, cancellations might occur and I will keep a first come first served alternate list. It will all be last minute. Note that SOVREN has eased the Corral entrance times. Here are the highlights of the letter from Bill Hardrath, the SOVREN organizer of the Corral.

"If your club arranged for a kiosk space please set up as early as possible. Remember that these are basically club information booths. Limited sales of club regalia are allowed but they are not vendor spaces.

The Car Corral entrance is past the general parking areas. Tickets are needed for admission; SOVREN Guild has no record of who is registered for the car corral and cars without proper credentials will not be allowed past the gate house. Passenger tickets may be purchased at the car corral entrance - exact change or a check will be appreciated. Cars should be parked in the corral between 8:30 AM and 10:30 AM. Early birds will probably not be allowed in, and late arrivals may be asked to park in an overflow area or required to wait outside of the car corral area until the parade laps are over. After parking, drivers and passengers must check in at the registration table to receive parade lap assignments, sign track waivers, pick up a dash plaque, etc. A placard to be filled out and displayed to identify the car and driver will be provided - this will be used for judging. Additional documentation or signs are welcome but please make sure that nothing will be blown around the car corral or fall against the cars.

It can be very hectic in the car corral and there are a limited number of SOVREN Guild volunteers working in this area. It will be very much appreciated if someone from your club can help with parking in your club's car corral area as the cars arrive at the track in the morning and after the parade laps.

We expect to have parade laps during lunch, but delays caused by weather or mechanical problems during the morning session may curtail or eliminate this activity. Your understanding is appreciated. The parade laps provide a chance to safely experience the track and display the cars in motion - it is not an opportunity to race. Some of the cars are not capable of negotiating the track at high speed, and many of the drivers will not be familiar with the track. Let's keep this activity safe for everyone. Any cars having known or suspected fluid leaks should not be driven on the track. General instructions for the parade laps will be in the registration packet. A lead car and driver from each club will be designated for the parade laps, that driver will get detailed parade lap instructions and the other club members will be expected to follow that car. At least we'll try that this year and see how it works out. A number of folks have volunteered at the races for years but have never had the opportunity to see the track from a car. If anyone has "extra" (legal) seats in their car, and would be willing to take passengers on the parade lap, we will match some of the Guild volunteers with those cars. Sign up at the car corral registration desk.

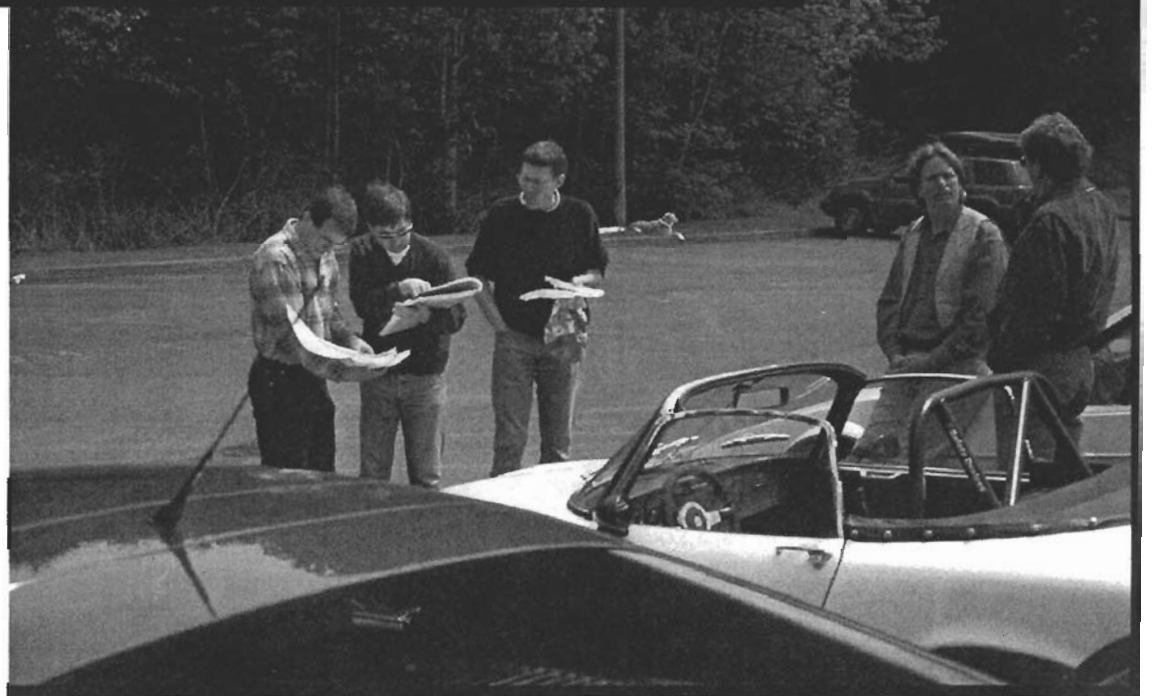
Trophies for 1st, 2nd and 3rd place for cars manufactured in the 90's and later, 70's and 80's, 50's and earlier, as well as "Best of Car Corral" will be awarded around 2:00 PM each day. Judges will be children and

*(Continued on page 4)*



## Member Notes

Compiled by members: No Member's Notes this month. Enjoy the photos from the Eastside Drive! Courtesy of the Conti's.





*(From the Chair, Continued from page 2)*

young adults associated with the SOVREN or the Guild. This is a "beauty contest" rather than a concours so the results can be surprising. Winners will be announced over the track PA system. There may be additional prizes awarded by random drawing. Pick up any trophies or prizes at the car corral registration desk."

Thanks to Gary Holt for taking the lead on getting polo shirts with the Club logo embroidered on them. With luck we will have shirts for sale at the Historics and will take special orders that we will try to deliver at the ABFM.

I suspect we will not have another

newsletter before the ABFM. Look for an article by Jim Taylor, our club representative to the ABFM, in this issue for participant info. Otherwise we'll post updates on the website and Evites.

If you are using our online or newsletter Event Calendar for your car event plans please note SOVREN has had changes and cancellations. Please make a note of them. Thanks to member Bob Wells for the updates. Also as per a few member's request we have added the contact numbers for most of the organizers of the events we list.

This is not club related but I feel I should mention it anyway. Within the "Conference" community, four racecar

trailers have been stolen in as many weeks, both enclosed and flatbed. Two near Vancouver, BC, one in Beaverton, Oregon, one in Woodinville, WA. Don't know if they are related or coincidence but if you have a trailer you might want to get a tongue lock rather than just a chain around a tree.

Also if you have any news about your Lotus car, or car events you would like to share it with other members, please drop me or Dan Morrison an email with a couple of sentences for the "Member's Notes" section of the newsletter.

See you at Pacific Raceways.

-André



Non-club member Chuck Hart's 1961 Elite at the Spring Sprints.

(978) 851-8370

[easygo@tingleslotus.com](mailto:easygo@tingleslotus.com)  
[www.tingleslotus.com](http://www.tingleslotus.com)

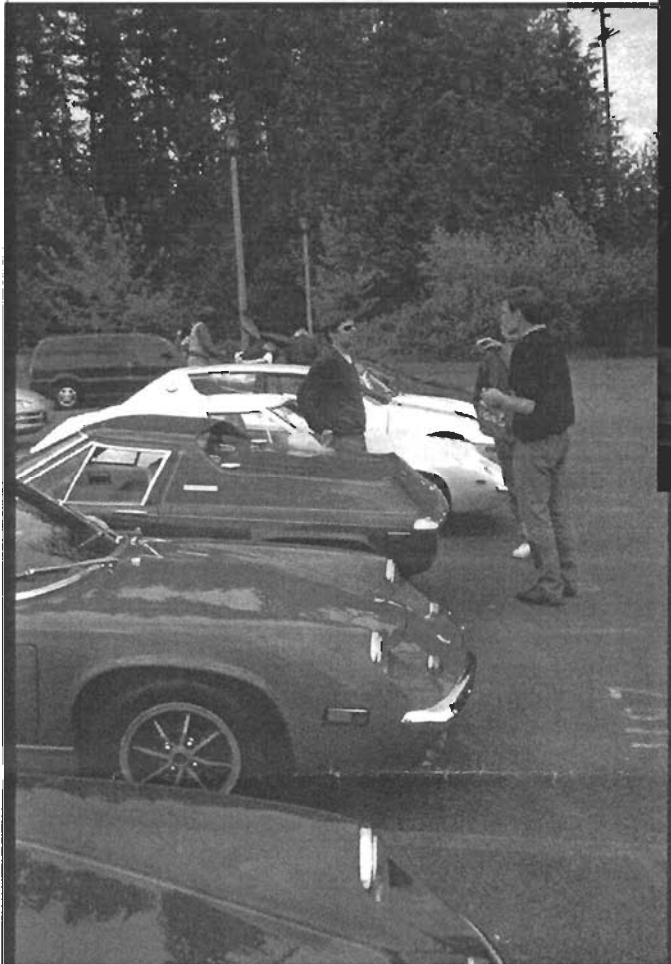


TINGLE'S LOTUS CENTER

1615 SHAWSHEEN ST., UNIT 8  
TEWKSBURY MA 01876



### More Photos from the Eastside Drive. Courtesy of the Conti's.



### Evergreen Lotus Car Club

P.O. Box 40481  
Bellevue, WA 98015-4481

- Chairman: André Samson (206) 528-8141  
andre\_gs@compuserve.com
- Membership: Jim Taylor .....(206) 232-2237  
jimtaylor@seanet.com
- Treasurer: Dave Billings....(425) 788-1900  
dave@bilcoh.com
- Webmaster: André Samson (206) 528-8141  
andre\_gs@compuserve.com
- Editor: Dan Morrison.(425) 379-6330  
danmo@yahoo.com



Non-club member Chuck Hart's 1961 Elite at the Spring Sprints.

Membership in the ELCC is \$20/year and is prorated in three month increments. This includes a club roster and a subscription to *Lotus Lines*.

Club Website <http://www.elcc.org>

**Event Calendar**

## July

**5-7, ELCC Lotus Car Corral at SOVREN Vintage Races, Pacific Raceways - Kent, WA**

12-14, NVRG Historic Races PIR - Portland, OR

12, NWARC Lapping Day - Bremerton, WA

13, IRDC Driver Training, Pacific Raceways - Kent, WA

17, Corvette Marque Club of Seattle School Days, Pacific Raceways - Kent, WA

21, Forest Grove Concours - Forest Grove, OR

26, Western Washington ABFM Cocktail Party, Park Place Inc., Bellevue, WA

**27, ELCC Awning at the Western Washington All British Field Meet - Bellevue Community College, WA**

## August

9, Cascade Sportscar Club Driver Training, PIR - Portland, OR

10, SOVREN Speedfair Races, - Bremerton, WA

10-11, ICSCC Race #6, CSCC, PIR - Portland, OR

11, SCCA, NW Region with Vintage Grids - Bremerton, WA

17, NW Motorsports Driver Training, Spokane, WA

17-18, ICSCC Race #7, IRDC, Pacific Raceways - Kent, WA

**24, ELCC Event TBA**

24, Team Continental Driver Training, PIR - Portland, OR

30, Club Lotus Northwest Track Day, PIR - Portland, OR

30, ICSCC Race #8-9, TC, Thunderhill - CA

31, Portland All British Field Meet, PIR- Portland, OR

## September

1-2, Portland All British Field Meet - Portland, OR

1-2, ICSCC Race #8-9, TC, Thunderhill - CA

7-8, ICSCC Race #10, SCCBC, Mission - Vancouver, BC

**14, ELCC Olympic Peninsula Wine Tour, - WA**

21-22, SOVREN Fall Finale Races, Pacific Raceways - Kent, WA

20-23, Lotus Limited Lotus Owners Gathering (L.O.G.) 22 - Lake Geneva, Wisconsin

27, NWARC Lapping Day - Bremerton, WA

28-29, ICSCC Race #11, CSCC, PIR - Portland, OR

## October

5, NWMS Driver Training, Spokane, WA

5-6, SOVREN Maryhill Hillclimb and Concours - Maryhill, WA

5-6, ICSCC Race #12, IRDC, Pacific Raceways - Kent, WA

**12, ELCC Event TBA**

20, SCCBC Enduro Race, Mission Raceway - Vancouver, BC

24-27, West Coast Lotus Meet, Monterey and Laguna Seca, CA

25, Cascade Sportscar Club Driver Training, PIR - Portland, OR

26, Cascade Sportscar Club 8 Hour Enduro Race, PIR - Portland, OR

26, NWARC Driver Training - Bremerton, WA

## November

**16, ELCC Event TBA**

## December

**7, ELCC Annual Holiday Party**

2003

## January

**7, Officer's Meeting Wedgwood Alehouse, Seattle, 7pm**

Contacts for Further Event Information:

NOTE: Please do not call numbers after 9:00 pm Pacific time.

## Car Clubs

BMWCCA: BMW Car Club of America

(425) 481-9571

CMCS: Corvette Marque Club of Seattle

(425) 486-2309

NWARC: Northwest Alfa Romeo Club

(360) 766-4405

WWSCC: Western Washington Sports Car Council

(206) 255-0658

## Racing Clubs

SOVREN: Society of Vintage Racing Enthusiasts

(206) 232-4644

ICSCC: International Conference of Sports Car Clubs

(425) 226-1338

BSCC: Bremerton Sports Car Club

(360) 697-1761

CSCC: Cascade Sports Car Club, Portland, OR

(503) 543-8161

IRDC: International Race Drivers Club, Seattle, WA

(206) 781-8199

NWMS: Northwest Motor Sports, Spokane, WA

(509) 928-0701

SCCBC: Sports Car Club of British Columbia

(604) 824-7277

TC: Team Continental, Portland, Or

(503) 645-9058

VMSC: Victoria Motor Sports Club, British Columbia

(250) 475-2606

SCCA: Sports Car Club of America, NW Region

(206) 292-0500

SCCA Oregon Region

(503) 697-9649



## dave bean engineering



Official Lotus Vintage Parts  
Distributor for the United States &  
Canada



636 east saint charles street • star route 3 • san andreas ca 95249 • usa  
Phone ..... (209) 754-5802 Fax ..... (209) 754-5177  
US & Canadian TOLL-FREE FAX ORDERS (800) 469-7789



## BROOKLANDS BRITISH CAR

PARTS-SERVICE-RESTORATION

LOTUS ELAN/EUROPA/ECLAT/ESPRIT

M-F 10AM-6PM OR BY APPMT.

8235 SO. TACOMA WAY, TACOMA, WA 98499

SHOP/TECH ASSISTANCE: 1-253-584-2033

PARTS/MAILORDER: 1-800-244-4648

MASTERCARD & VISA GLADLY ACCEPTED



### Lotus Parts Specialists

Raymond D. Psulkowski  
290 Raub Road, Quakertown, PA 18951  
Phone (215) 538-9323 Fax (215) 538-0158  
e-mail [rdent@rdent.com](mailto:rdent@rdent.com)  
<http://www.rdent.com>

# JAE

Independent Lotus  
& English Ford  
Parts and Service

Jay and Jeff

805.967.5767  
805.967.6183



*Lotus Lines* is the official newsletter of the Evergreen Lotus Car Club. Opinions expressed in *Lotus Lines* are those of the author and do not necessarily represent those of the ELCC or its officers. Use all technical information at your own risk. Please submit all articles, art work, advertising, and photographs to the Editor. All other official business should be directed to the Chairman. Other Lotus clubs are welcome to use the material printed in the *Lotus Lines*, provided that the ELCC, *Lotus Lines* and author are duly credited. The ELCC is not affiliated with and does not represent Lotus Cars Ltd., Group Lotus, Team Lotus, or any other Lotus related organizations.

**Classified Advertising** for Members is free. Submit member ads to Dan Morrison by email ([danmo@yahoo.com](mailto:danmo@yahoo.com)). Personal ads will run for two months or until canceled. If you would like to continue running the ad, just let me know.

#### Advertising Rates for Businesses are:

|               |            |            |
|---------------|------------|------------|
| Business Card | \$5/issue  | \$30/year  |
| Quarter Page  | \$10/issue | \$60/year  |
| Half Page     | \$15/issue | \$90/year  |
| Full Page     | \$25/issue | \$150/year |

Questions? Please contact the Editor.

## Classified Advertisements

### For Sale: 1959 Series 1 Elite (#1054)

Stage 2, Professionally Prepared for Vintage Racing by Butch Dennison of Pete Lovely Racing, Excellent History, Car is Currently in the Federal Way, WA area and is in Excellent Condition. Call Rick at 253-952-9258 or 206-349-6662  
e-mail: [liquidgold@mindspring.com](mailto:liquidgold@mindspring.com)

### For Sale: 1963 Lotus Elan, Series 1

45700 miles. Red with original gray top and gray center console. Original teak 3/4 dash. Original style steel wheels and hub caps. A great example of the earliest Elans with low miles. Would prefer to sell to a good, local home. Asking \$20,000. Maury Montag, 425-391-5359

**Parts Wanted for 1968 Seven Series III.** Seeking LHD front frame from foot boxes forward to graft to skinned rear tub. Series II ok. Skinned or not. Pedal bracket for hydraulic clutch and pedals. Engine brackets for X-flow. Front anti-roll bar and lower a-frames. Rear axle a-frame and locating rods. Petrol tank. Headlight buckets. Windshield frame. Handbrake lever. Caterham reprint of Seven Manual. Andre 206-528-8141 or [andre\\_gs@compuserve.com](mailto:andre_gs@compuserve.com) (WA)

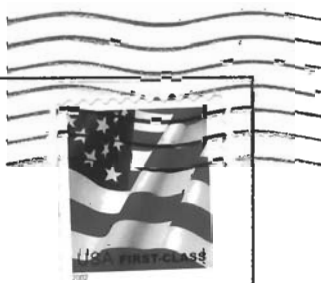
### For Sale: '85 Caterham Seven

Original owner, 1700cc super sprint engine, cycle fenders, 30K, alloy/black, \$17000 John Schneeman 206-854-6706



**Evergreen  
Lotus Car Club**

P.O. Box 40481  
Bellevue, WA 98015-4481



RECEIVED  
JUL 05 2002



9524975564

