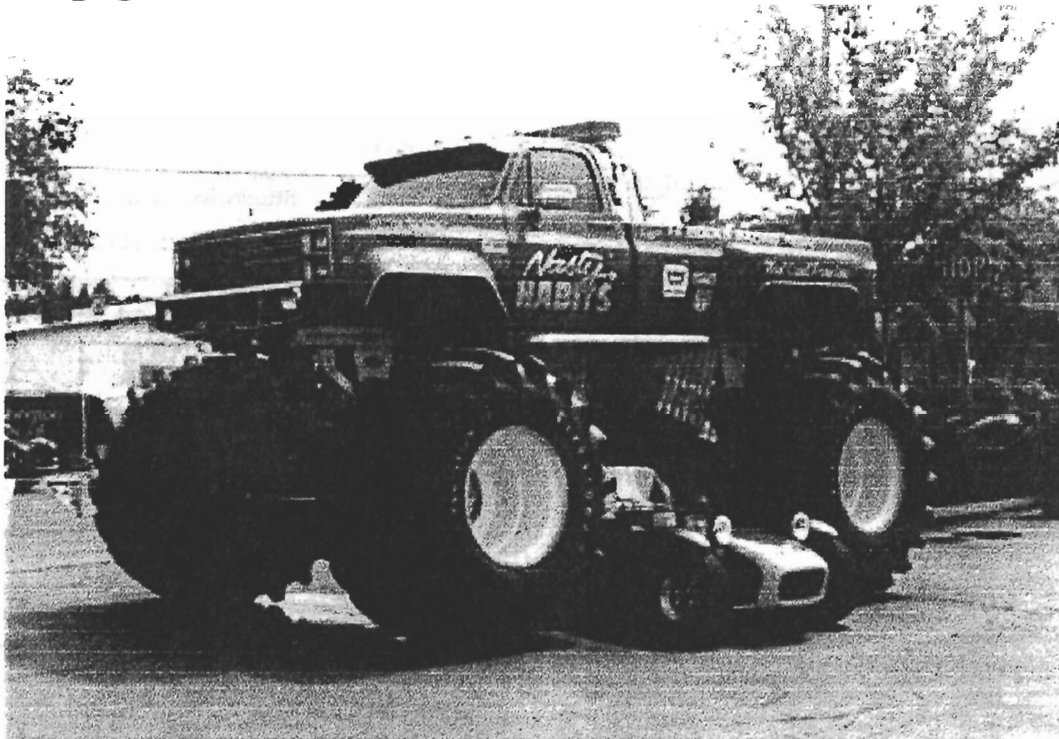


LOTUS LINES



NEWSLETTER OF THE EVERGREEN LOTUS CAR CLUB

DECEMBER
1998



Looking Back

-Steve Shipley

It's been a great year. The 50th Anniversary provided a variety of opportunities to celebrate the marque. So we drove, we raced, we showed, and we preserved the heritage.

The future of Lotus in the US is inhibited by the fact that the massively popular Elise is restricted to the rest of the world. It was painful to be in England this year and see sparkling Elises parked in rows. But here in the US, we rarely see one, specially imported.

So for most of us, a Lotus is a vintage car which requires a greater commitment to preserve. And it seems that the commitment continues. The cars that are in good condition are being preserved and the acquisition of projects and their subsequent restoration continues.

It may be my enthusiast's point of view but that commitment is creating results. It looks like the average car is in better cosmetic condition and better capable of demonstrating the performance that attracts us to the cars. So congratulations to all on the year's success.

But enough of that, what's the deal on the monster truck? Those of you who attended the photo selection for the calendar already know the story. For those who missed, I'll fill you in.

The calendar looks like it will exceed the high standard set by the previous year. The photography was richer and more expressive this year. It was unanimous that Jess and Eddie Marker's composition will be the image on the cover. There were many winning photos but only twelve months. The club was easily able to put together a selection that represents our enthusiasm.

Classic
Lotus
restoration
service
& repair

Randall Fehr Restorations

30 South Horton Street
Seattle, Washington 98134
206-622-7469

Lotus Parts Specialists

Raymond D. Psulkowski
290 Raub Road, Quakertown, PA 18951
Phone (215) 538-9323 Fax (215) 538-0158
e-mail rdent@rdent.com
<http://www.rdent.com>

**BROOKLANDS
BRITISH CAR**

PARTS-SERVICE-RESTORATION
LOTUS ELAN/EUROPA/ECLAT/ESPRIT
**OPEN M-F 10AM-6PM OR BY
APPOINTMENT**

8235 SO. TACOMA WAY. TACOMA, WA 98499
SHOP/TECH ASSISTANCE: 1-206-584-2033
PARTS/MAILORDER: 1-800-244-4648
MASTERCARD_&_VISA_GLADLY_ACCEPTED

dave bean engineering
Official Lotus Vintage Parts
Distributor for the United States & Canada

www.davebean.com
636 east saint charles street • star route 3 • san andreas ca 95249 • usa
Phone (209) 754-5802 Fax (209) 754-5177
US & Canadian TOLL-FREE FAX ORDERS (800) 469-7789

JAE Independent Lotus
& English Ford
Parts and Service

Jay, Jeff and Tom

805.967.5767
805.967.6183

Evergreen Lotus Car Club 1999 Color Wall Calendar

For your viewing pleasure, we proudly present the **Third Annual ELCC Wall Calendar!** This club calendar is starting to gain popularity around the Lotus community. Whether it's your kitchen refrigerator, your desk at work, or the tool bench in the garage, the ELCC Wall Calendar looks good all 12 months of the year. It also makes a great gift for friends or family.

The calendar is the result of a club photo competition juried by members, depicting (mostly) members' Lotuses. Road and race models from Seven to early Esprit are included in beautiful photographs digitally processed and directly printed (approximately 8" x 10") for each copy of the calendar (no color photocopies). In addition, club events, historic Lotus events and legends' birthdays are noted.

Format:

11" x 8.5" (11 x 17 displayed), wire bound, digital prints.

Price: (all prices are in US funds)

Members: \$15 each (postage and handling included)

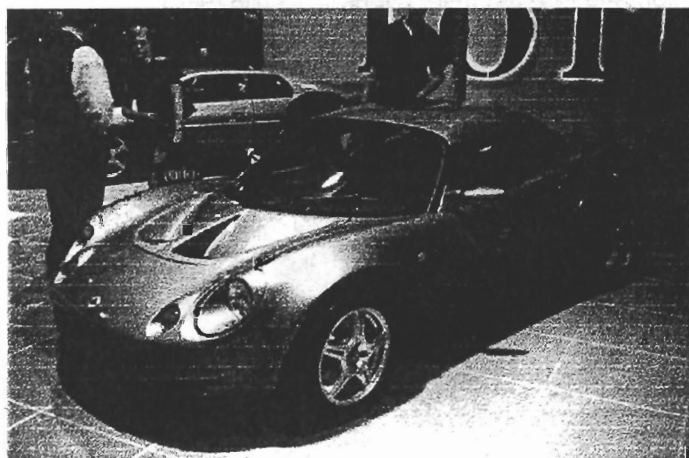
Non-members: \$20 each (postage and handling included)

How to Order:

We are currently producing this year's calendar. You can reserve a copy by sending your name, mailing address and your payment to the

Evergreen Lotus Car Club
P.O. Box 40481
Bellevue, WA 98015-4481

Delivery? We'll send you the calendar as soon as it's finished! Call Mike Galos for estimated schedule.



Evergreen Lotus Car Club FYI and COA

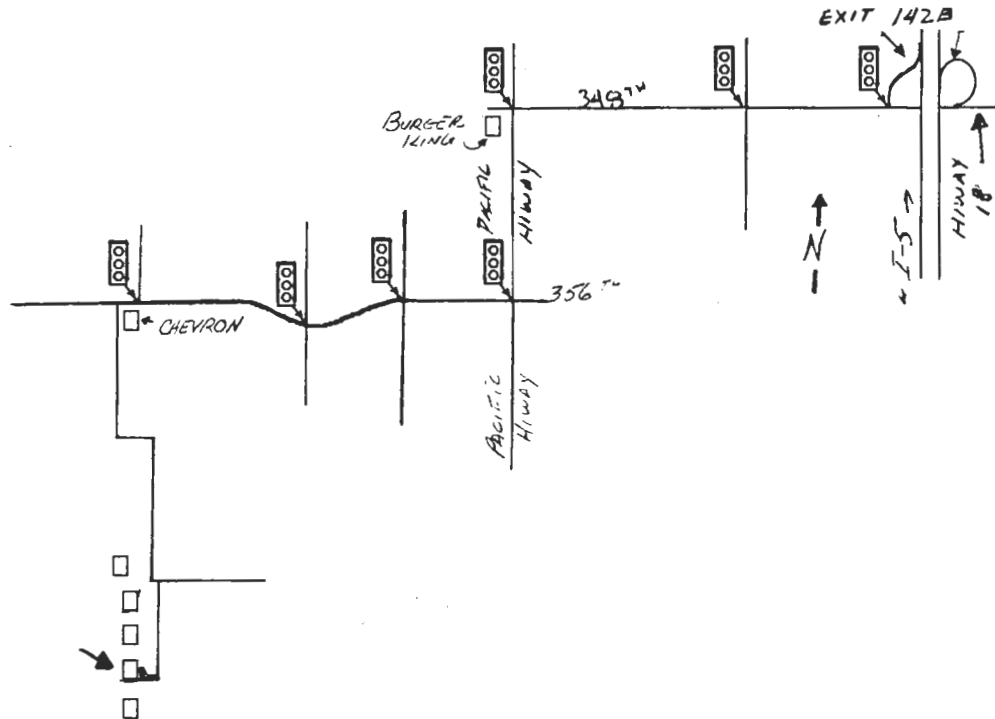
Lotus Lines is the official newsletter of the Evergreen Lotus Car Club. Opinions expressed in *Lotus Lines* are those of the author and do not necessarily represent those of the ELCC or its officers. Use all technical information at your own risk. Please submit all articles, art work, advertising, and photographs to the Editor. All other official business should be directed to the President. Other Lotus clubs are welcome to use the material printed in the *Lotus Lines*, provided that the ELCC, *Lotus Lines* and author are duly credited. The ELCC is not affiliated and does not represent Lotus Cars Ltd., Group Lotus, Team Lotus, or any other Lotus related organizations.

Classified Advertising for Members is free.

Advertising Rates for Businesses are:

Business Card	\$5/issue	\$30/year
Quarter Page	\$10/issue	\$60/year
Half Page	\$15/issue	\$90/year
Full Page	\$25/issue	\$150/year

Questions? Please contact the Editor.



December Meeting: ELCC Christmas Party Saturday, December 5th, 6:00pm

The format is come-as-you-like and bring a wrapped gift (value under \$20, humor encouraged) for each participant, and a potluck dish. Contact the Markers to RSVP and coordinate your potluck dish.

Jess and Eddie Marker
 1716 65th Ave. N.E.
 253-927-2300

From the North:

- Take 1-5 South
- Exit 142B
- Turn Right (westbound)
- At 2nd traffic light, turn left (Southbound on Hwy. 99) Landmark-Burger King
- Go-south to next traffic light, turn right (West on 356th)
- Go west on 356th until you see a Chevron station and turn left just beyond it. (S. on 64th)
- Make "S" turn (hard left, hard right) at yellow arrow sign. (that puts you on 65th)
- At next yellow arrow sign, go straight on narrow lane.
- House is 3rd on the right (brown). (1716 65th Ave. N.E.)

From the South:

- Take 1-5 North
- Exit 142B
- Go west under I-5
- At 3rd traffic light, turn left (Southbound on Hwy. 99) Landmark-Burger King
- Go South next traffic light, turn right (West on 356th)
- Go west on 356th until you see a Chevron station and turn left just beyond it. (S. on 64th)
- Make "S" turn (hard left, hard right) at yellow arrow sign. (that puts you on 65th)
- At next yellow arrow sign, go straight on narrow lane.
- House is 3rd on the right (brown). (1716 65th Ave. N.E.)

From 167, go west on Hwy. 18:

- (Follow directions from the South)

1998 Track event schedule:

BMW ACA events info: contact Jacqueline Kahn at 206-481-9571

Corvette Marque Club event info: contact John Bell at 360-653-1247

NWARC events info: contact Pete Bristow at 253-661-3580

SAAC event info: contact David Sklover at 425-482-0848 evenings before 9pm, or v-davsk@microsoft.com

Club Lotus Northwest event info: contact Karl Schick at 503-650-4735

General information regarding track events: contact Randall Fehr at 206-782-8951

1998 Events Calendar

December -

5th ELCC Christmas Party

Saturday, December 5th, 6:00pm

Marker Residence, Tacoma, WA

Since last year's party was so much fun, the Markers have agreed to host the ELCC Christmas Party again for this year!

This party is one of our longest standing traditions and one of our most popular events. The format is come-as-you-like and bring a wrapped gift (value under \$20, humor encouraged) for each participant, and a potluck dish. Contact the Markers to RSVP and coordinate your potluck dish. Jess and Eddie Marker, 253-927-2300.



Caterham Silverstone

Contacts for Further Event Information:

WWSCC is the Western Washington Sports Car Council, 206-255-0658.

SCCA is the Sports Car Club of America Northwest Region, 206-292-0500. www.nwr-scca.org

SOVREN is the Society of Vintage Racing Enthusiasts, 206-935-4109.

BSCC is the Bremerton Sports Car Club, 206-869-5680 or 360-479-0248.

OR is the Oregon Region of the SCCA, 503-697-9649.

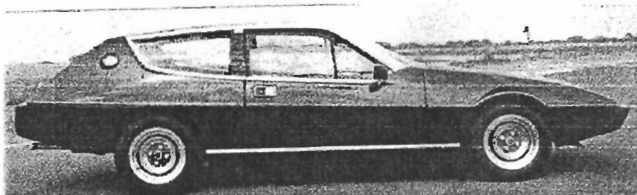
SS is the Sand & Sage Sports Car Club, Richland, 509-943-2093.

NWARC is the NorthWest Alfa Romeo Club, 253-582-0803.

BMWACA is the BMW Automobile Club of America, 206-481-9571.

FOR SALE - WANTED - ETC

For future reference: If you have a classified ad or an ad that you want to continue to use from one *Lotus Lines* to the next, please give me (Steve Shipley, 206-932-4123) a call and I'll be happy to put it in again. Thanks.



FOR SALE: 1976 Elite, Dual Weber carburetors. 5-speed transmission. Recent Engine & Trans overhaul. Factory shop manual and some parts. asking \$6500 obo. call Dale Cook 425-643-3556

FOR SALE: 1974 Elite White 5 speed air original running gear with factory shop manual Approx 65,000 miles passes emissions. 99% complete, 95% correct. 2nd owner Car has won second and third place in shows.

Runs and drives nicely but needs rear brakes. \$8000 obo Don Francis 206-723-4731

Evergreen Lotus Car Club FYI and COA

Chairman:	Mike Galos	425-881-7398
Membership:	Jim Taylor	206-232-2237
Treasurer:	Craig Shuck	425-788-1900
Newsletter Editor:	Steve Shipley	206-932-4123
WebMaster:	Mark Clear	425-803-5340

Membership in the ELCC is \$20/year and is prorated in three month increments. This includes nine issues per year and a club roster.

Mailing Address for all ELCC correspondence is:
Evergreen Lotus Car Club
P.O. Box 40481
Bellevue, WA. 98015-4481, USA

ELCC WebSite <http://www.fastcorner.com/lotus>

EVERGREEN LOTUS CAR CLUB

P.O. Box 40481

Bellevue, WA 98015-4481



First Class Mail



32117-4662 75

December Meeting

ELCC Christmas Party
Saturday, December 5th, 6:00pm
Marker Residence, Tacoma, WA
Jess and Eddie Marker, 253-927-2300.